

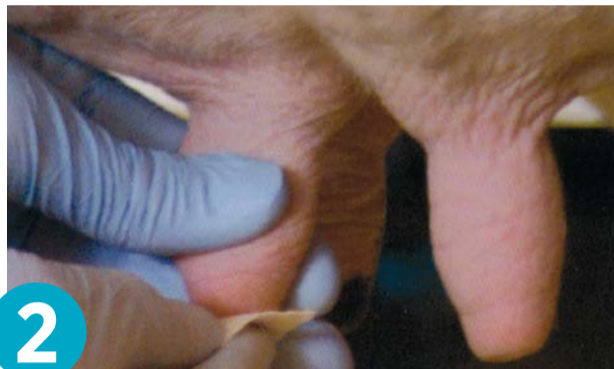
# HOW TO USE ORBESEAL<sup>®</sup>



## FOR CORRECT ADMINISTRATION OF YOUR DRY COW THERAPY PROGRAMME, PERFORM THE FOLLOWING STEPS:



**1** Keep syringes clean whilst preparing the teats and **DO NOT** immerse syringes in water. Dip teats in a rapid-acting pre-dip, leave for 30 seconds, then wipe each teat completely dry with separate disposable paper towels. Strip foremilk and discard.



**2** Always use a new pair of gloves for the treatment of each cow. Thoroughly disinfect the whole surface of the teat with a disposable alcohol or spirit soaked wipe. Repeat until the teat wipe comes away clean.



**3** Disinfect the far teats before the near teats to avoid accidental contamination of previously disinfected teats (as numbered). If using Antibiotic Dry Cow Therapy in combination with OrbeSeal, apply one ADCT tube per quarter (numbered as picture 5) and then repeat the disinfection procedure.



**4** Starting with the teat nearest you, insert the OrbeSeal syringe nozzle into the teat canal, firmly grasp to pinch the base of the teat at the udder attachment and **slowly** inject all contents. Be careful not to touch the nozzle of the syringe. Use one complete syringe per quarter. **Do not massage**. OrbeSeal must **remain** in the teat canal.

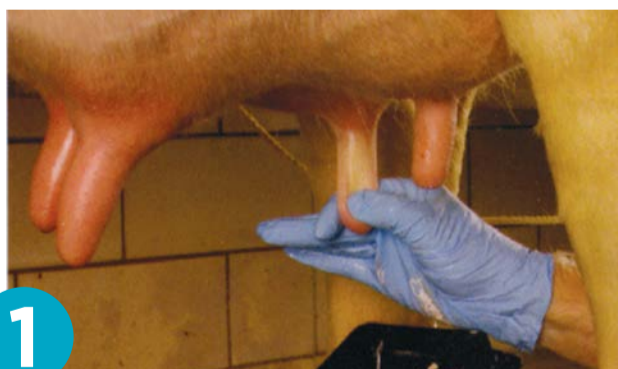


**5** Insert OrbeSeal into the nearest teats first (as numbered) to minimise contamination of teats that have not been treated.



**6** Apply a post-milking disinfectant to cover at least 90% of each teat. Mark each treated cow and keep her away from the milk supply. Treated animals should be allowed to stand for 30 minutes to allow the teat canal to close.

## TO REMOVE ORBESEAL, PERFORM THE FOLLOWING STEPS:



**1** To remove OrbeSeal, grasp the top of the teat, pinch tight and hand strip the entire quarter ten to twelve times prior to first milking.



**2** Strip and check the foremilk carefully for the first few milkings for any evidence of remaining particles. Adhere to withdrawal times for individual products - milk into a dump bucket for the appropriate time until returning to the main milking system.



**3** The milk sock and filter cannister should be inspected for residues after every milking and replaced as required. Ongoing parlour maintenance is essential for reducing the risk of mastitis and ensuring the production of high quality milk.

When managing dry cows, correct procedures must be followed to prevent mastitis infections. At all times dry cow materials should be kept away or shielded from possible faecal/urine contamination. Disposable gloves should be worn during the disinfection and infusion process. Take time when following these steps and do not combine with other jobs. Ensure this is done in a hygienic environment with good cow restraint.

For further information please contact your veterinary surgeon or Zoetis UK Ltd., Walton Oaks, Dorking Road, Walton on the Hill, Tadworth, Surrey KT20 7NS  
OrbeSeal contains 65% bismuth subnitrate. Withdrawal period: Zero days. Use medicines responsibly: [www.noah.co.uk/responsible](http://www.noah.co.uk/responsible) [POM-V](#) AH041/15